

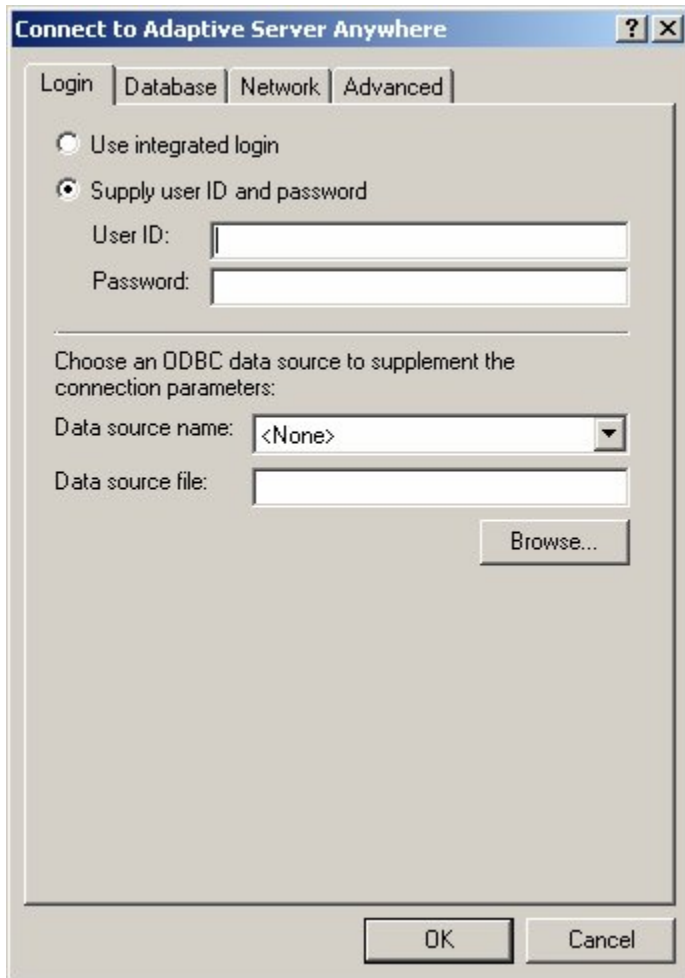
Hello,

I have faced one problem which I will like to share with you along with solution.

Once we do the local database extract if we forget the password then what the solution is. What I knew was to do everything from beginning that is reset the password do again generate database, database extract & again do local data base extract the result of which was you will loose all your changes in your previous .dbf file to overcome this problem I have found one solution which is as:

For Siebel version 7.7.x or higher:

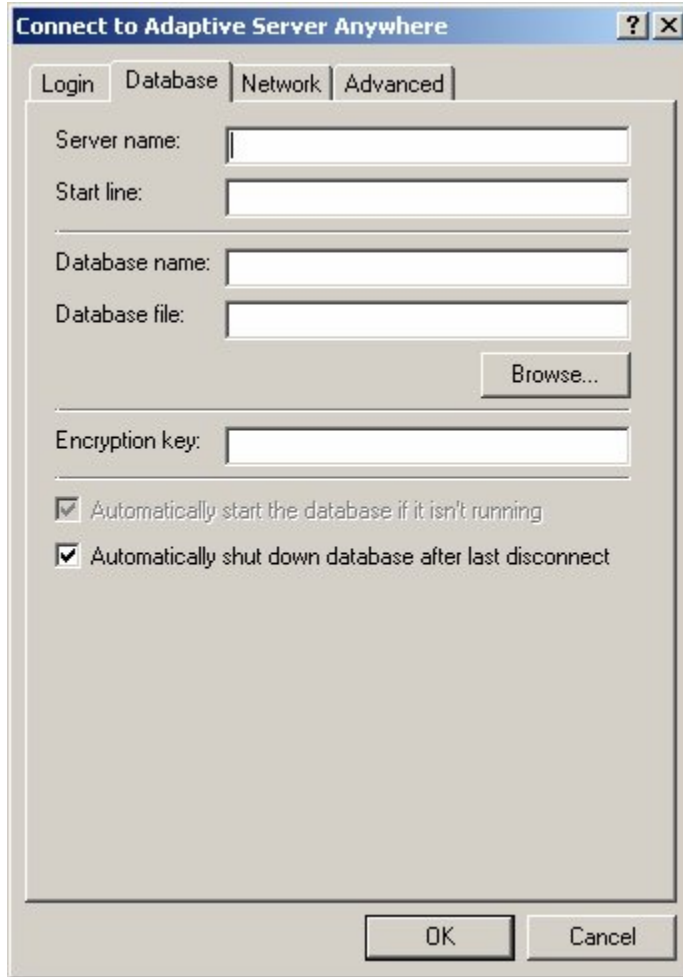
1. Go to Siebel\\Client\BIN\ search for dbisqlc.
2. Double click on that the following window will come.



3. Give user id as – DBA.(what ever may be your login you have to give this userid only).
4. Password- ENTERPRISE(the enterprise name is the password, plz check your enterprise name)

Note: The userid & the password should be in capital.

5. Go to database Tab:



The image shows a screenshot of a Windows-style dialog box titled "Connect to Adaptive Server Anywhere". The dialog has a blue title bar with a question mark icon and a close button. Below the title bar are four tabs: "Login", "Database", "Network", and "Advanced". The "Database" tab is selected. The dialog contains several input fields and checkboxes:

- Server name: [text input field]
- Start line: [text input field]
- Database name: [text input field]
- Database file: [text input field]
- Encryption key: [text input field]
- Automatically start the database if it isn't running:
- Automatically shut down database after last disconnect:

At the bottom right of the dialog, there is a "Browse..." button next to the "Database file" field. At the bottom center, there are "OK" and "Cancel" buttons.

6. Click on browse & select your local dbf file as shown

The image shows a Windows-style dialog box titled "Connect to Adaptive Server Anywhere". It has a blue title bar with a question mark and a close button. Below the title bar are four tabs: "Login", "Database", "Network", and "Advanced". The "Database" tab is selected. The dialog contains several input fields and checkboxes. The "Server name:" field is empty. The "Start line:" field is empty. The "Database name:" field is empty. The "Database file:" field contains the text "C:\77\Tools\LOCAL\sse_data.dbf". To the right of this field is a "Browse..." button. The "Encryption key:" field is empty. There are two checked checkboxes: "Automatically start the database if it isn't running" and "Automatically shut down database after last disconnect". At the bottom of the dialog are "OK" and "Cancel" buttons.

Connect to Adaptive Server Anywhere

Login Database Network Advanced

Server name:

Start line:

Database name:

Database file: Browse...

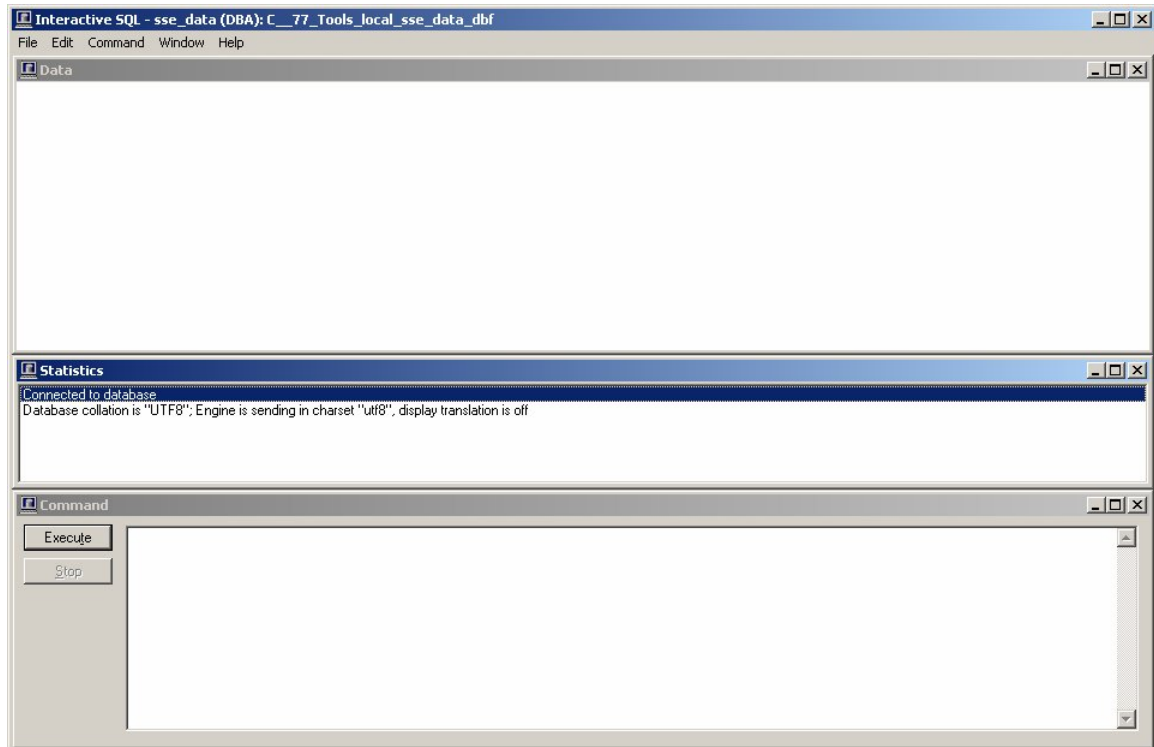
Encryption key:

Automatically start the database if it isn't running

Automatically shut down database after last disconnect

OK Cancel

7. Click ok



8. In the above figure the selected line shows connected to database.

9. Execute the following query:

```
select name from SYSUSERAUTH
where name not in ('SYS','DBA','PUBLIC','SIEBEL','DBO','dbo','SSE_ROLE') >#getuid.out.
```

10. The output of this query will store login id in getuid file at the any of the following paths:

C:\77\Tools\LOCAL\getuid

C:\77\Client\LOCAL\getuid

11. Open the file & you can see your login id (In case you forget your login id also).

12. Again run another query on dbisqlc for resetting the Password. To reset a user password, The SQL statement should contain the following:

```
grant connect to USERNAME identified by PASSWORD
grant connect to SIEBEL identified by PASSWORD
```

Eg: grant connect to PRI identified by PRI
grant connect to SIEBEL identified by PRI

Note: USERNAME = is the username you get in getuid file eg: Pri
Password = will be new password which will reset the previous password for you.
The Username & Password should be in Capital.

The tableowner for the local database is SIEBEL and the password is set to the same value as the password of the local USERNAME at the time when the database was initialized.

This document was downloaded from SiebelGuide.com

Whenever the local password is changed for the user, the SIEBEL password must also be changed. (USERNAME is the login name of the mobile user and PASSWORD is the new password for the mobile user. It is important to note that the values for USERNAME and PASSWORD are entered in upper case.). **NOTE:** If the SIEBEL password does not match the local password, then this will cause the unwanted behaviors:

13. The new password also needs to resent at server level so that you can do all COCI Functionality. Ask your admin to reset your password.

The password should be same what you have reset in your LOCAL dbf. As in above eg: I For user PRI it should reset to PRI only.

Now you can use your old dbf with all changes.

I hope it will be Helpful to many.

All the Best
Pri